

Drawings and Specifications as instruments of service are and shall remain the property of the Architect. They are not to be used on extensions of the project, or other projects, except by agreement in writing and appropriate compensation to the Architect.

The General Contractor is responsible for confirming and correlating dimensions at the job site. The Architect will not be responsible for construction means, methods, techniques, sequences, or procedures, or for safety precautions and programs in connection with the project.

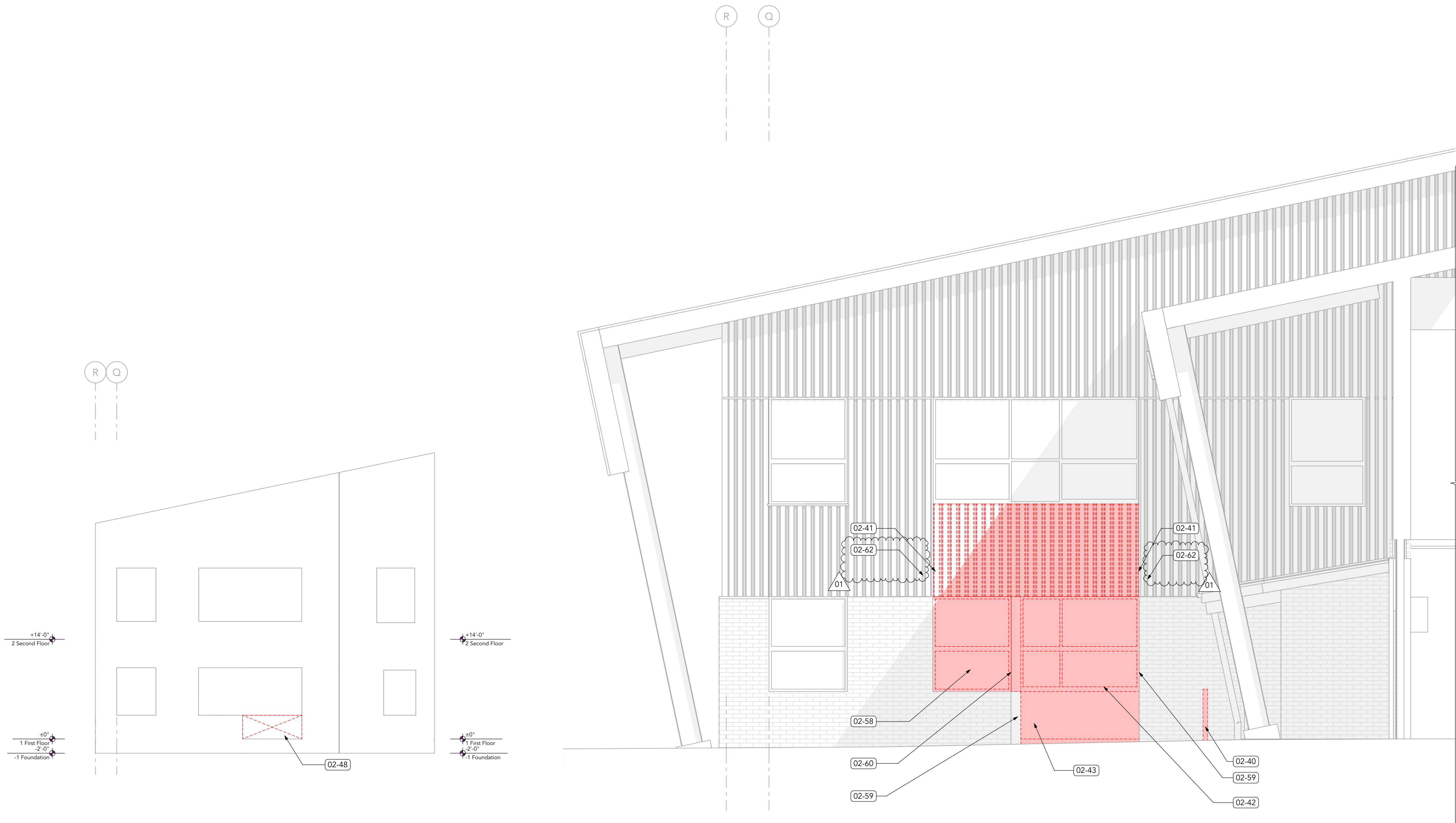
© 2025 RHIZO Architecture

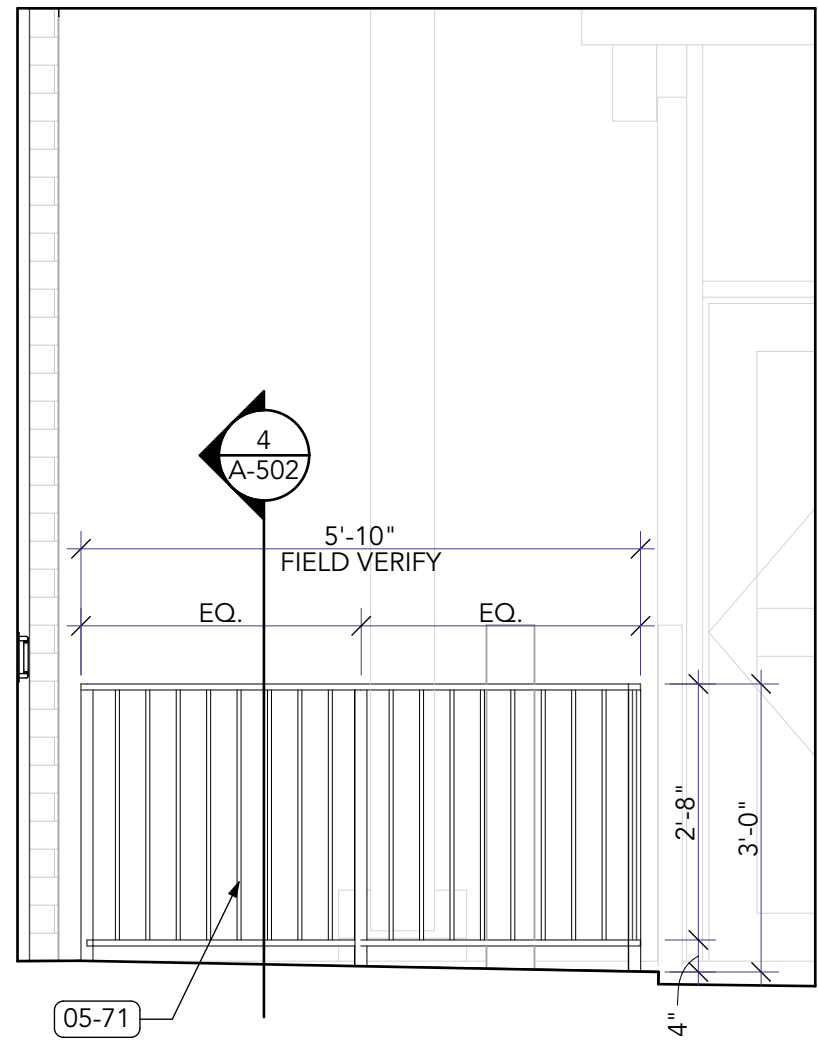
REDMOND SCHOOL DISTRICT  
RIDGEVIEW HIGH SCHOOL  
SECURE ENTRY PROJECT  
4555 SW ELKHORN AVE.  
REDMOND, OR 97756

DRAWN: #  
CHECKED: #  
PRINT DATE: 01.27.2026  
ISSUANCE LOG:  
00 1/5/26  
PERMIT SET  
01 1/27/26  
REVISION 01 / ADDENDUM 01

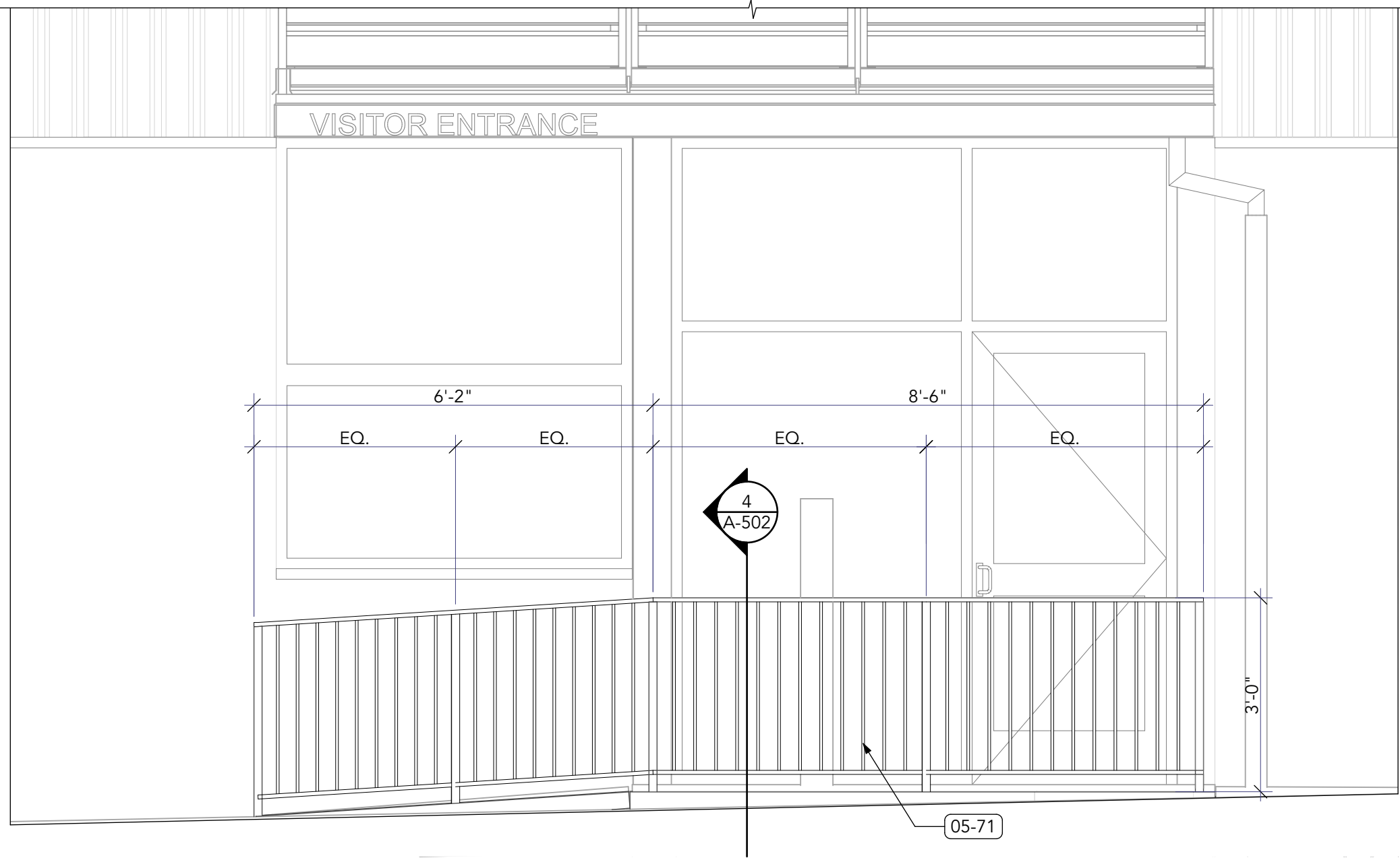
SHEET:  
DEMO ELEVATIONS

AD201





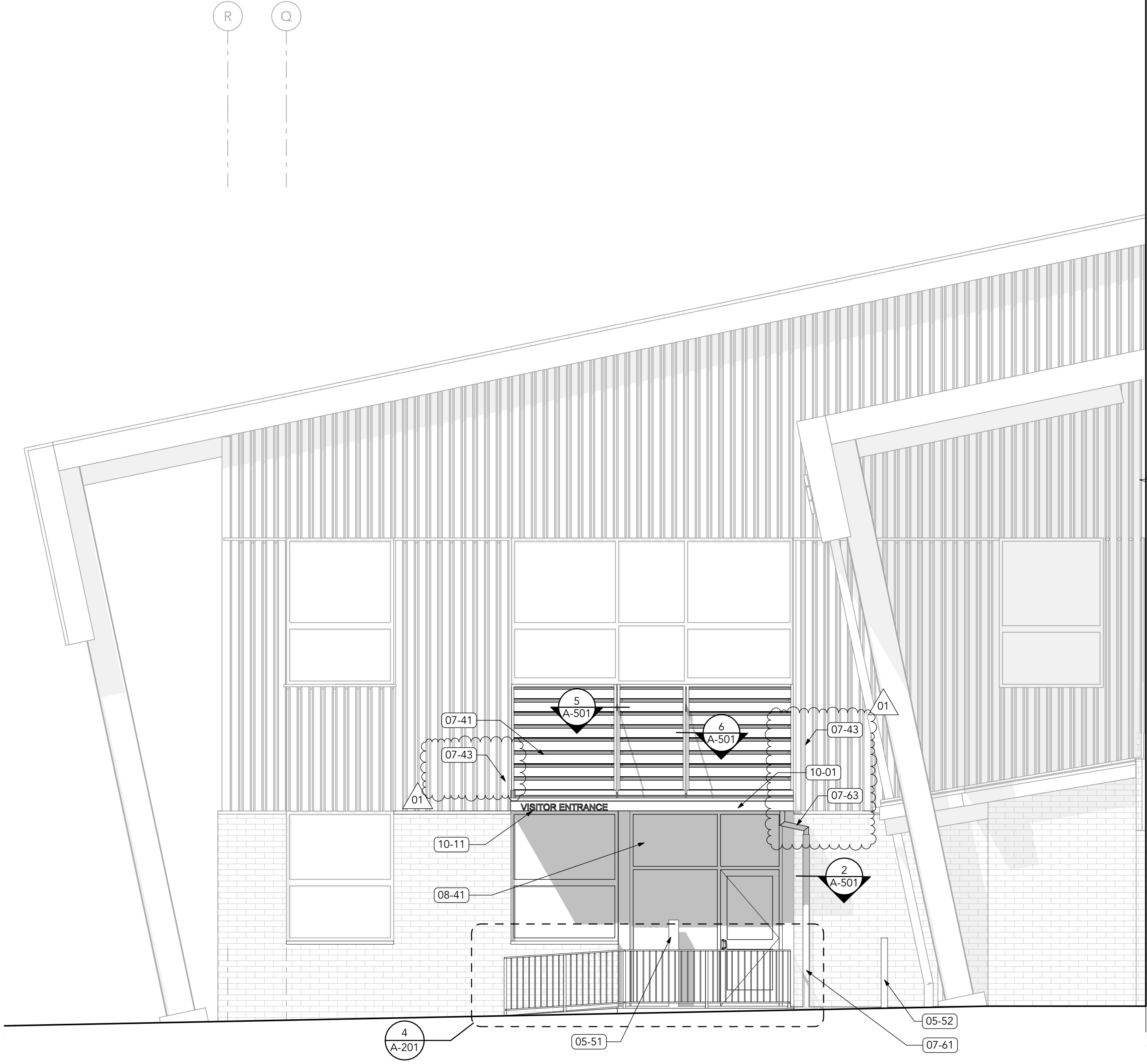
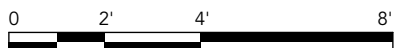
3 NORTH RAILING ELEVATION  
SCALE: 1/2" = 1'-0"



4 EAST RAILING ELEVATION  
SCALE: 1/2" = 1'-0"



2 PARTIAL SOUTH ELEVATION  
SCALE: 1/4" = 1'-0"



1 PARTIAL EAST ELEVATION  
SCALE: 1/4" = 1'-0"

KEYNOTES

05 METALS

- 05-51 (N) STEEL COMMUNICATION POST
- 05-52 (N) STEEL COMMUNICATION POST TO REPLACE EXISTING. REINSTALL DEVICES
- 05-71 (N) DECORATIVE METAL RAILING

07 THERMAL & MOISTURE PROTECTION

- 07-41 (N) SHEET METAL SIDING
- 07-43 REPLACE SHEET METAL SIDING PANEL, FURRING, INSULATION & WRB ADJACENT TO NEW CONSTRUCTION
- 07-61 (N) PIPE STEEL DOWNSPOUT
- 07-63 (N) SHEET METAL DOWNSPOUT FROM GUTTER TO SCHEDULE 40 PIPE

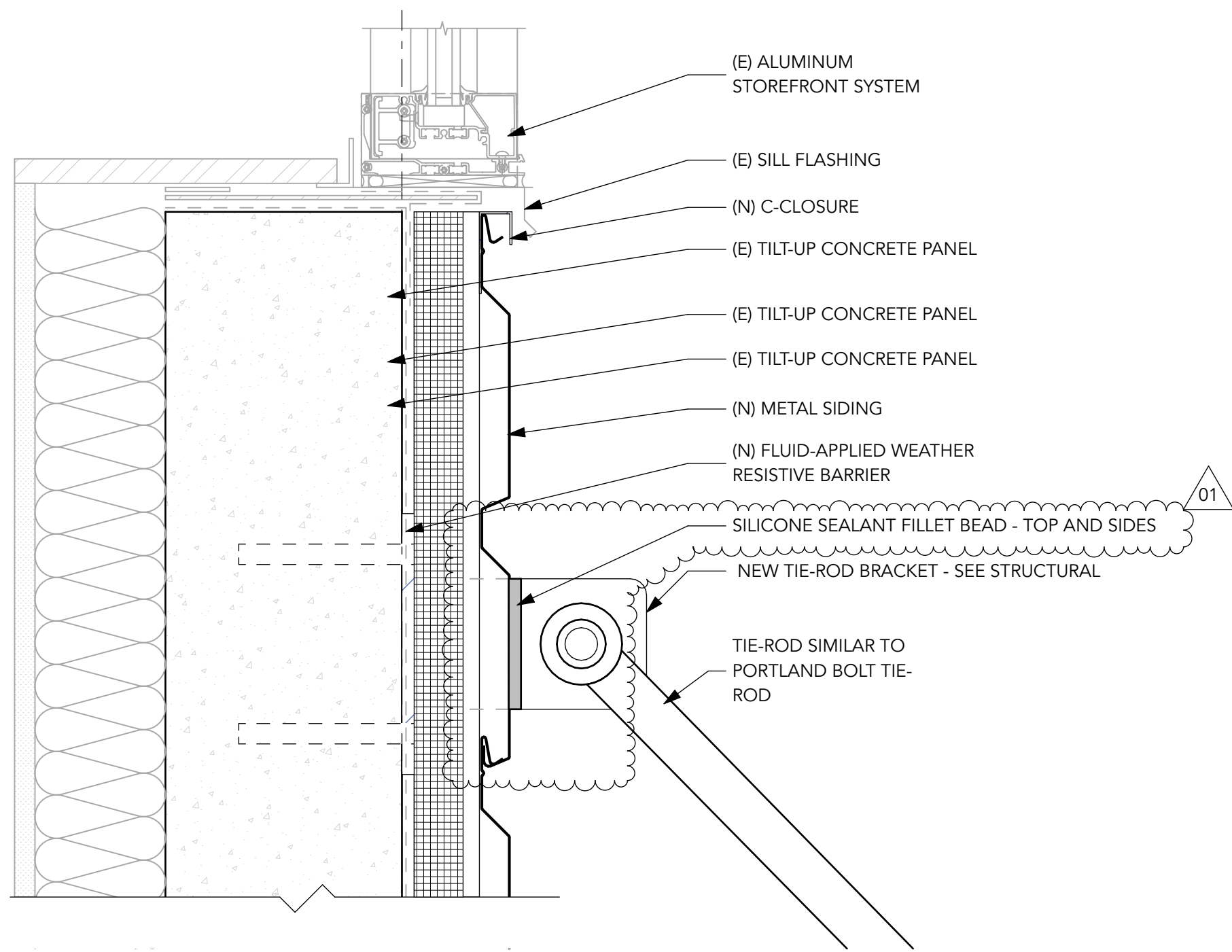
08 OPENINGS

- 08-41 (N) ALUMINUM STOREFRONT SYSTEM

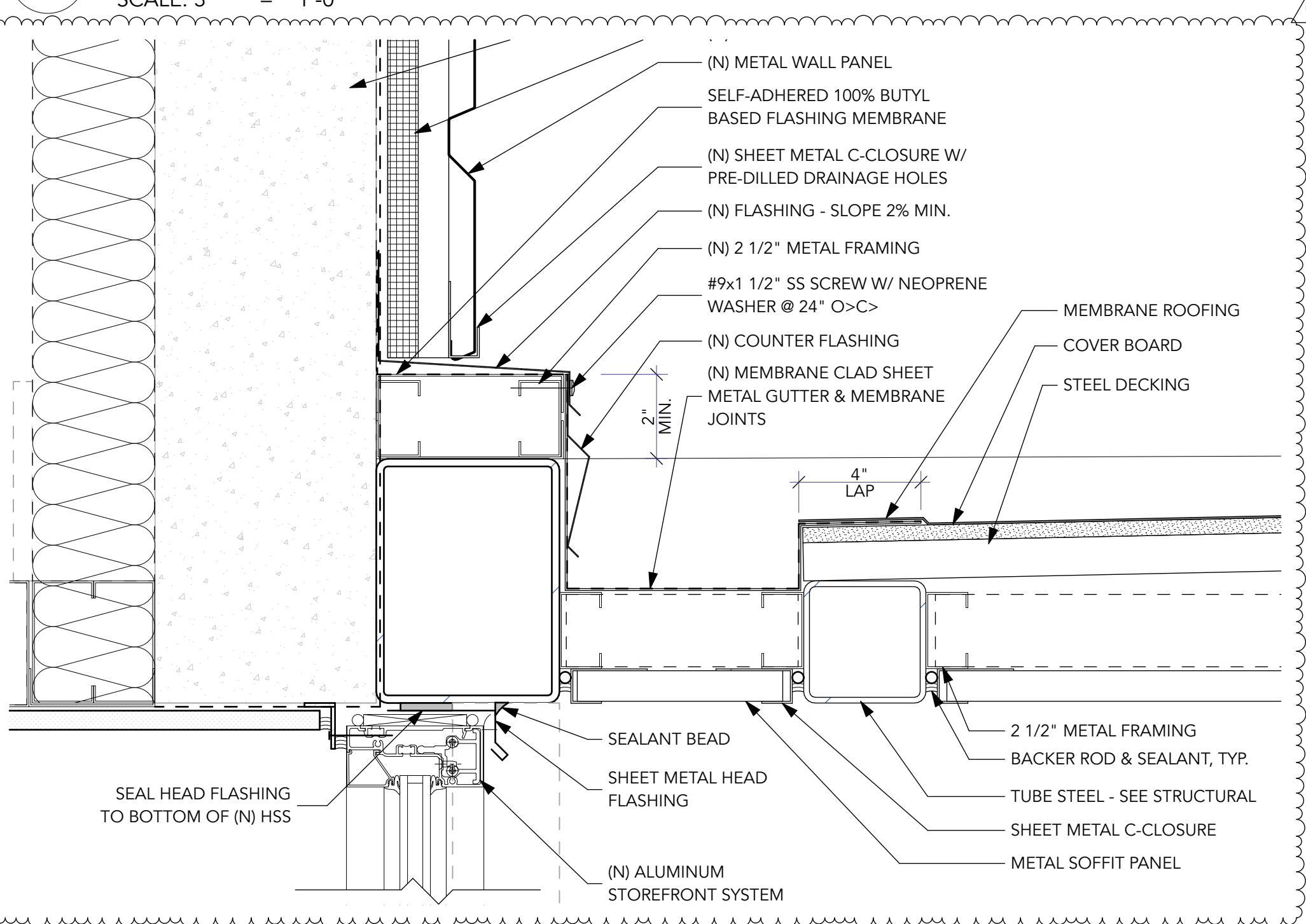
10 SPECIALTIES

- 10-01 (N) EXTERIOR CANOPY
- 10-11 (N) CAST BUILDING LETTERS

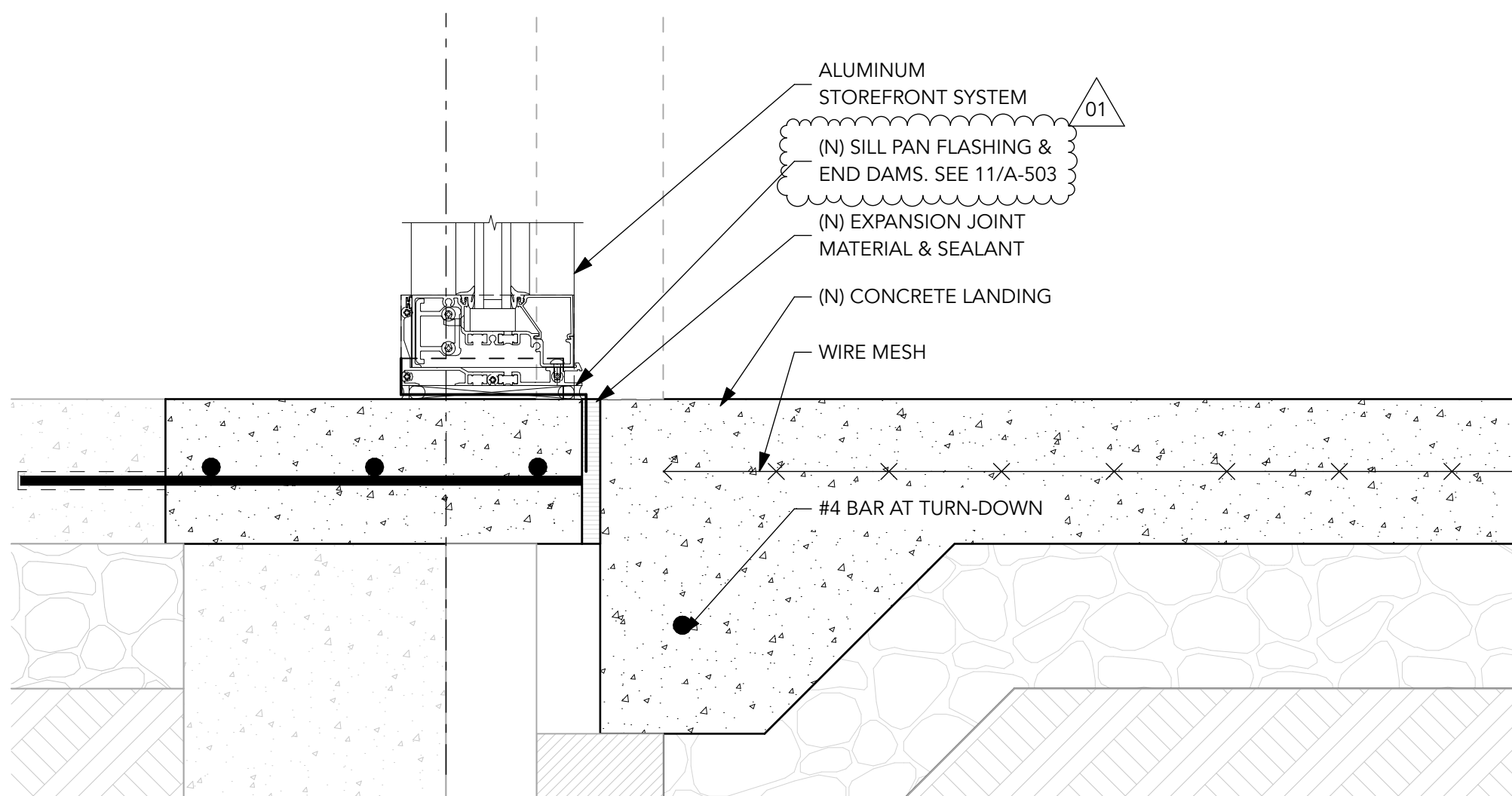




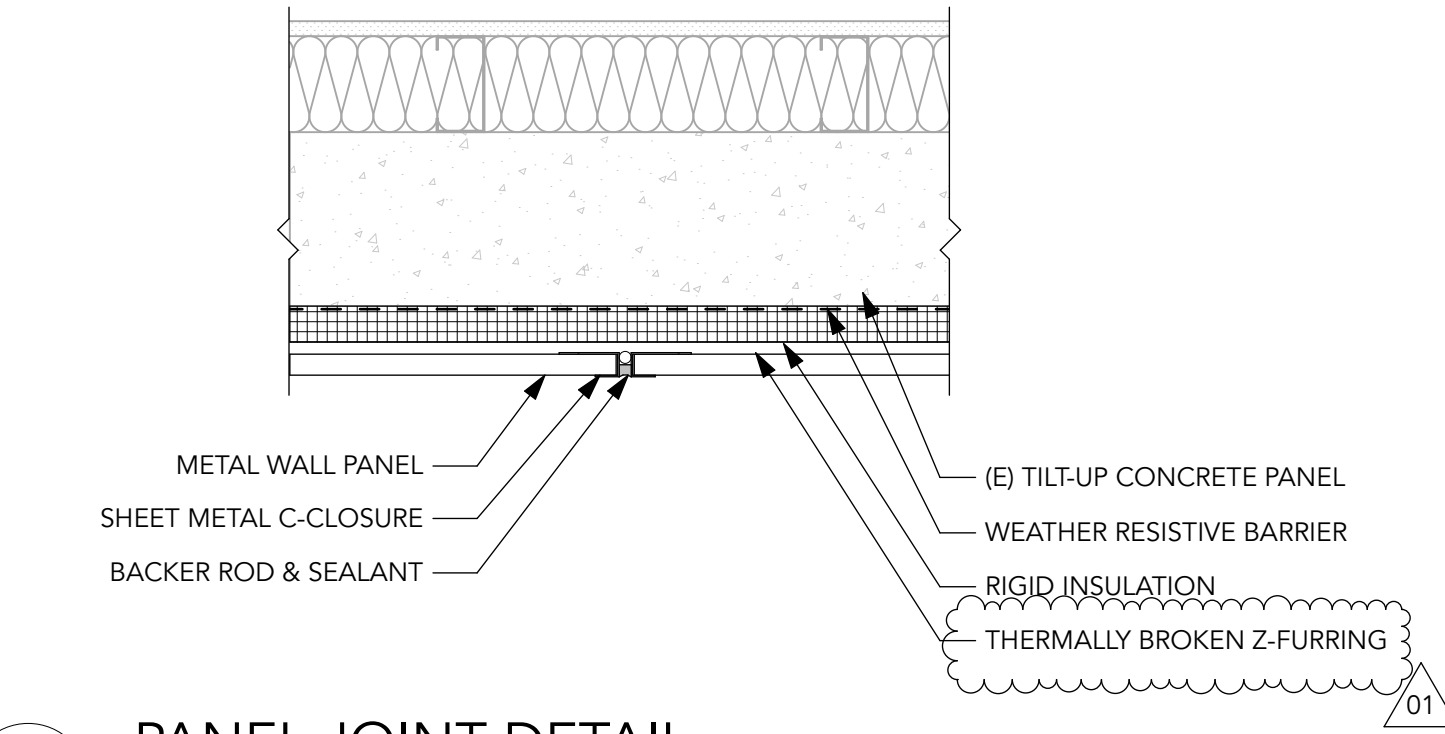
9 CANOPY DETAIL @ TIE-ROD  
A-501 SCALE: 3" = 1'-0"



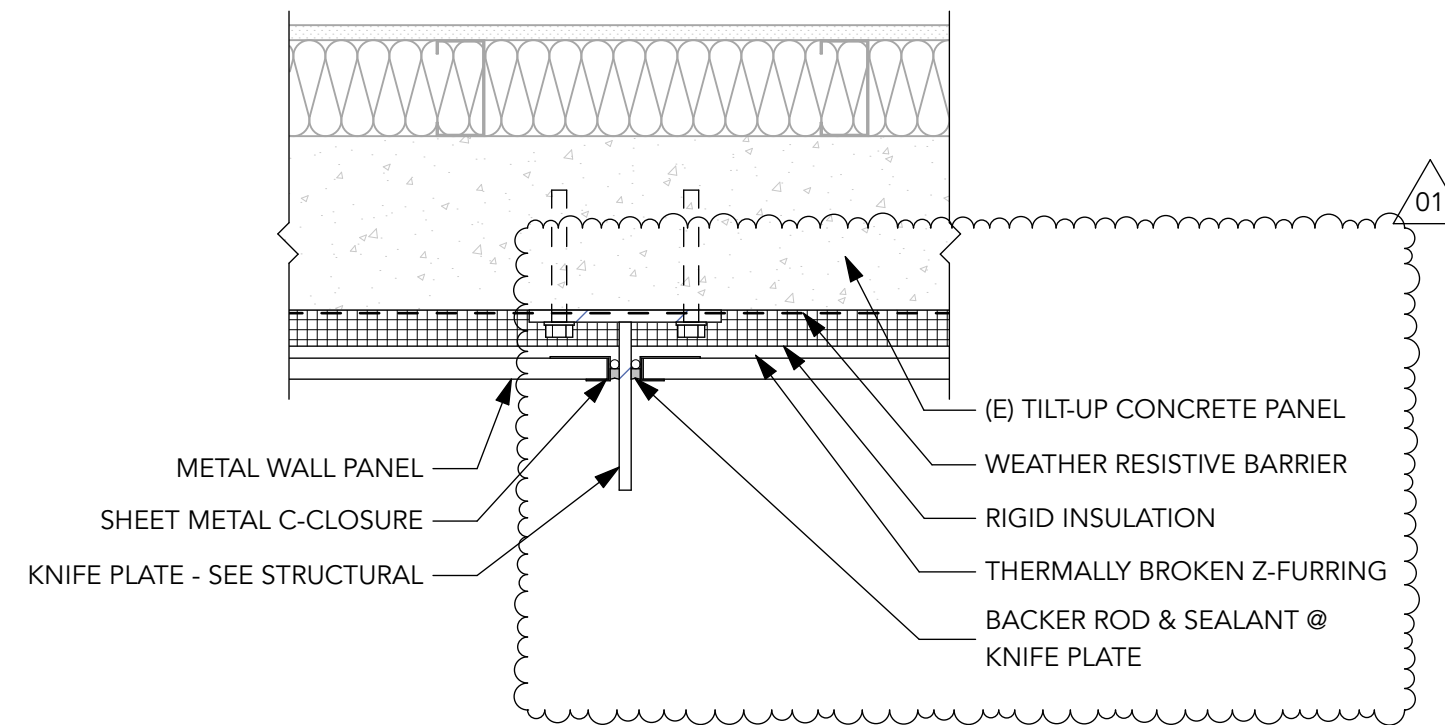
8 CANOPY DETAIL @ WALL  
A-501 SCALE: 3" = 1'-0"



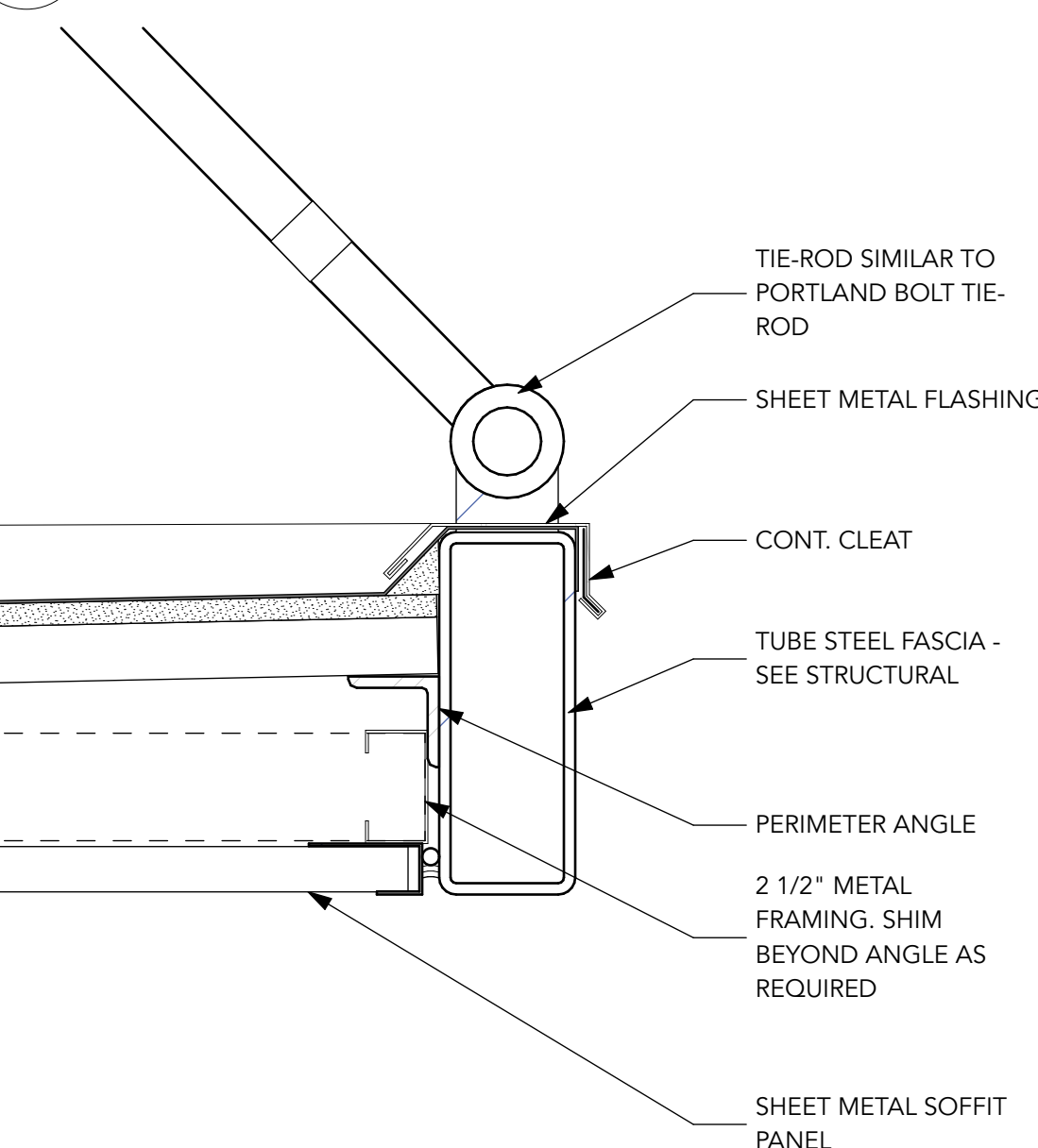
7 STOREFRONT SILL DETAIL  
A-501 SCALE: 3" = 1'-0"



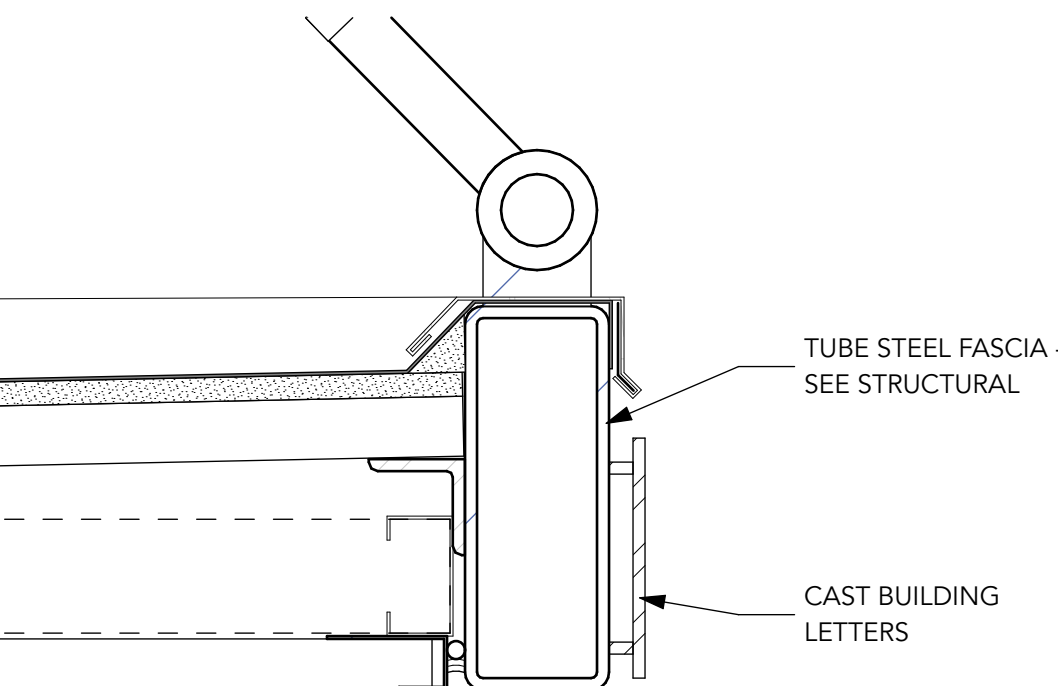
6 PANEL JOINT DETAIL  
A-501 SCALE: 1 1/2" = 1'-0"



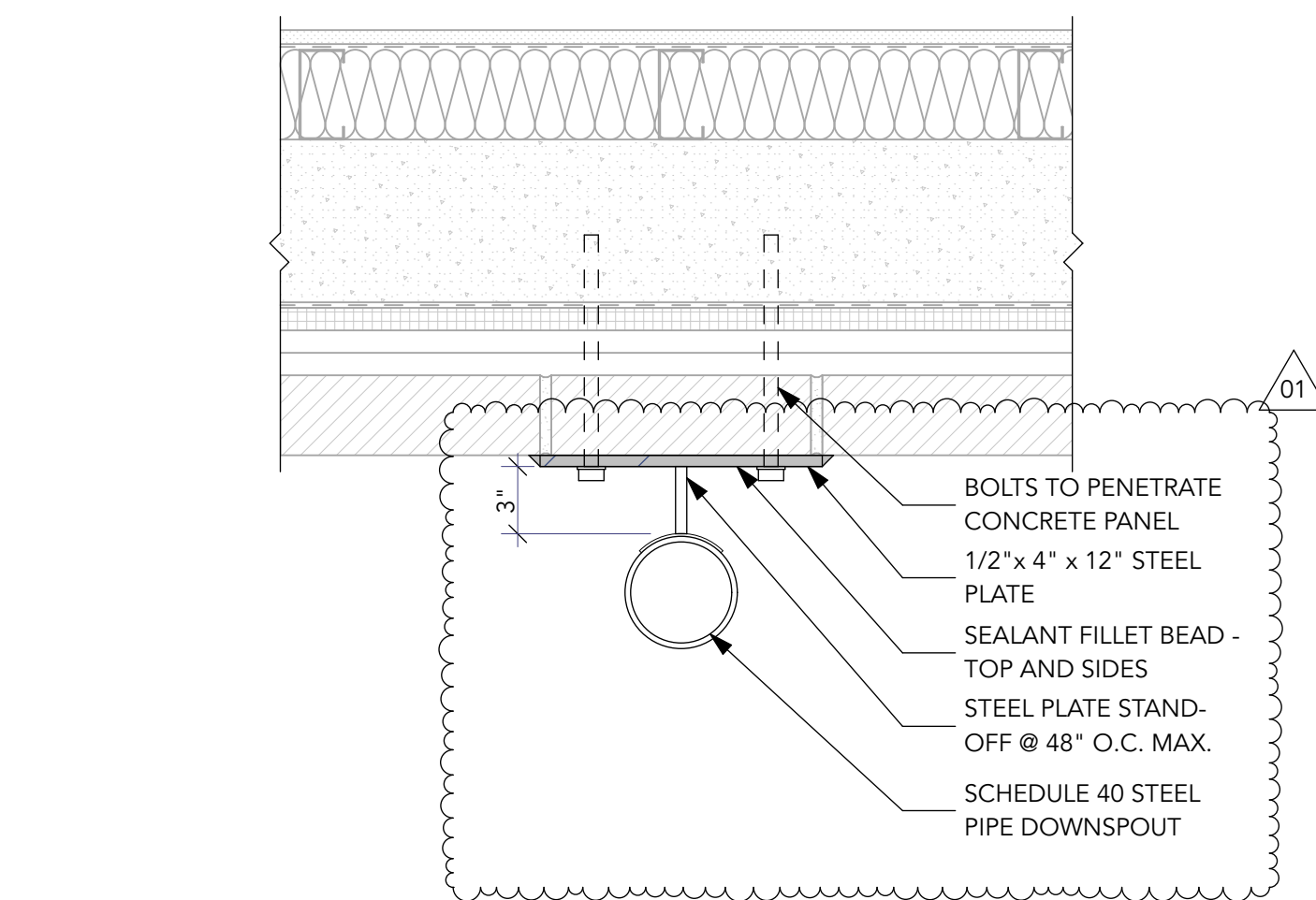
5 TIE-ROD PLATE DETAIL  
A-501 SCALE: 1 1/2" = 1'-0"



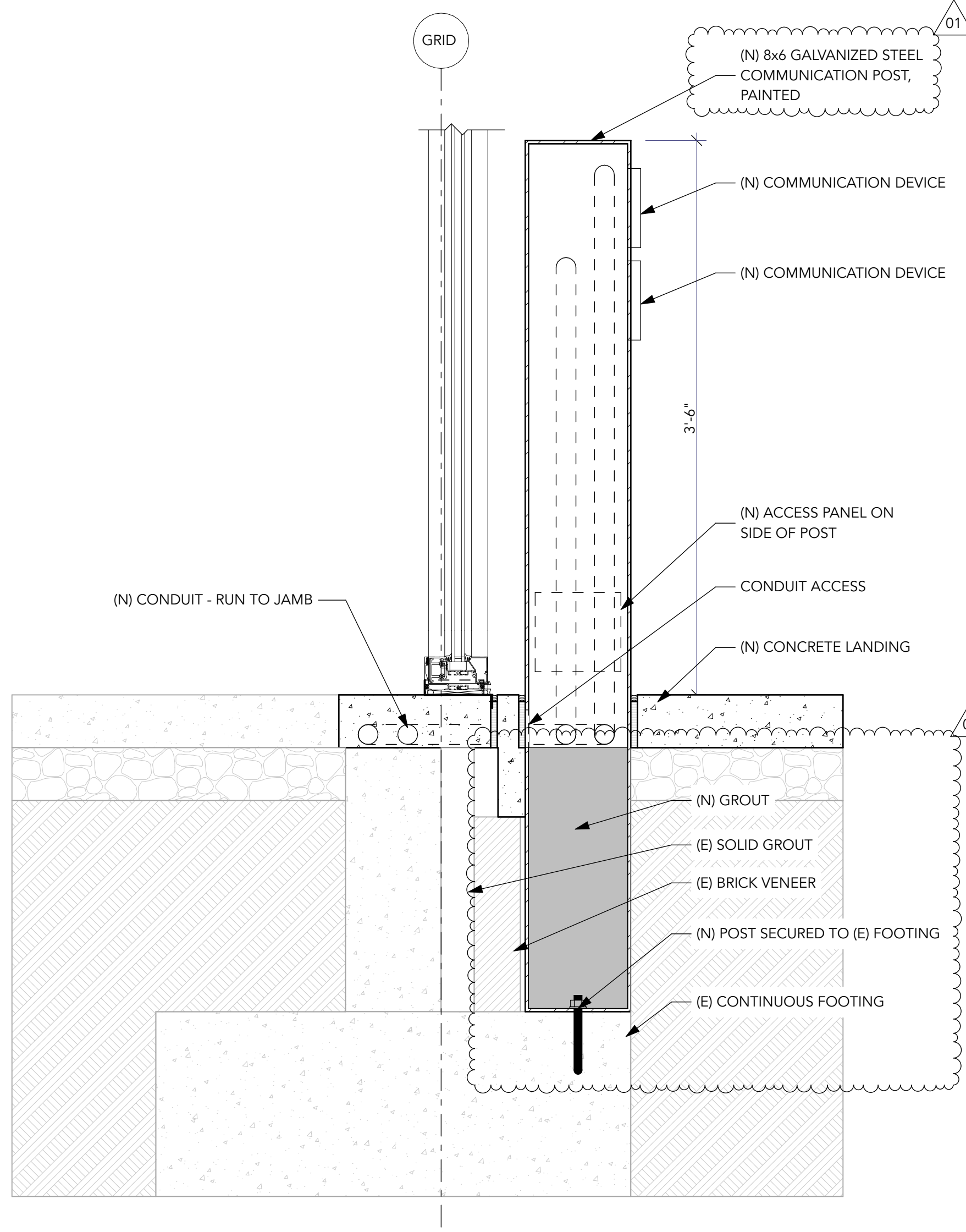
4 CANOPY DETAIL @ EAVE  
A-501 SCALE: 3" = 1'-0"



3 BUILDING LETTERS @ CANOPY  
A-501 SCALE: 3" = 1'-0"

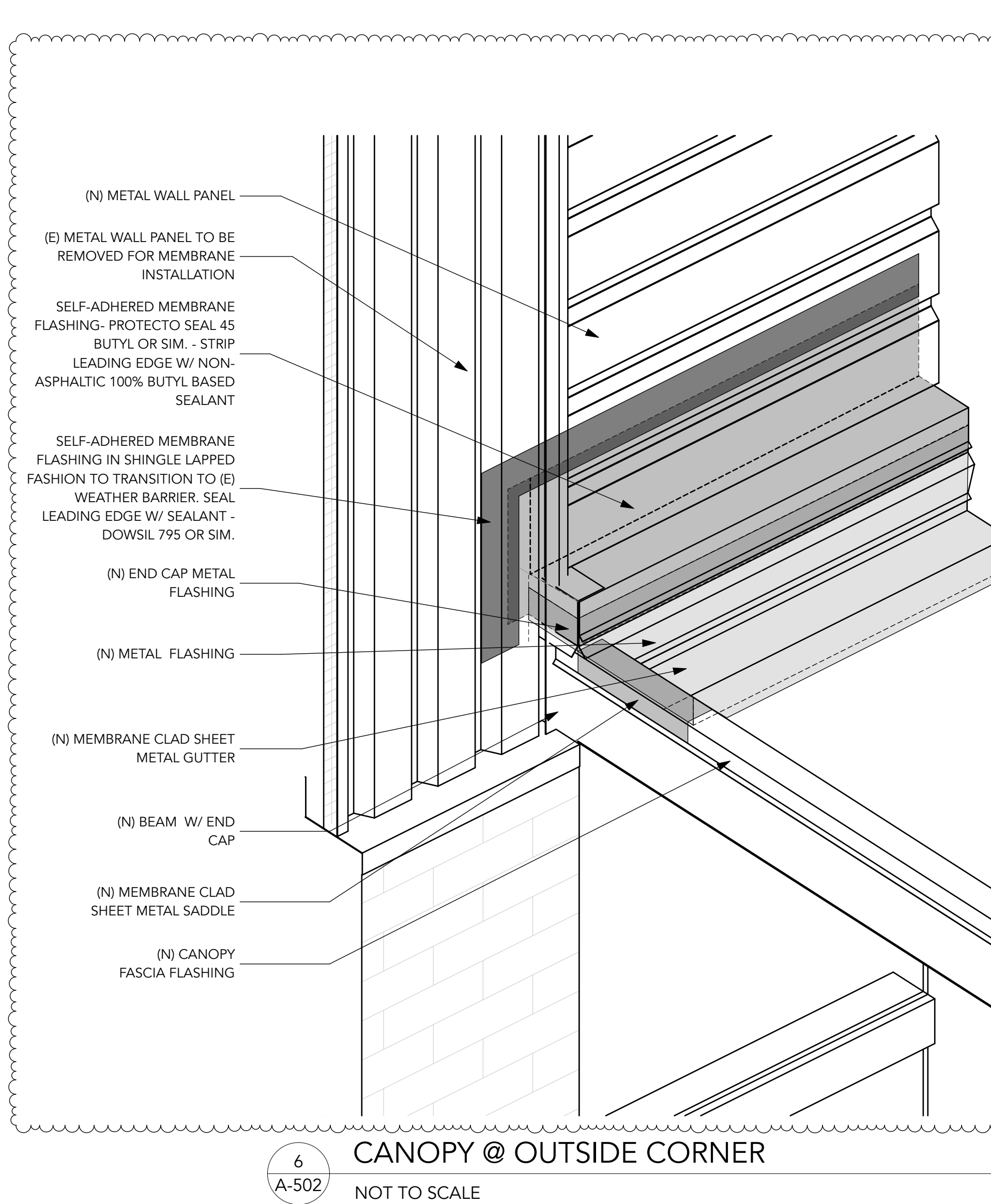


2 DOWNSPOUT DETAIL  
A-501 SCALE: 1 1/2" = 1'-0"

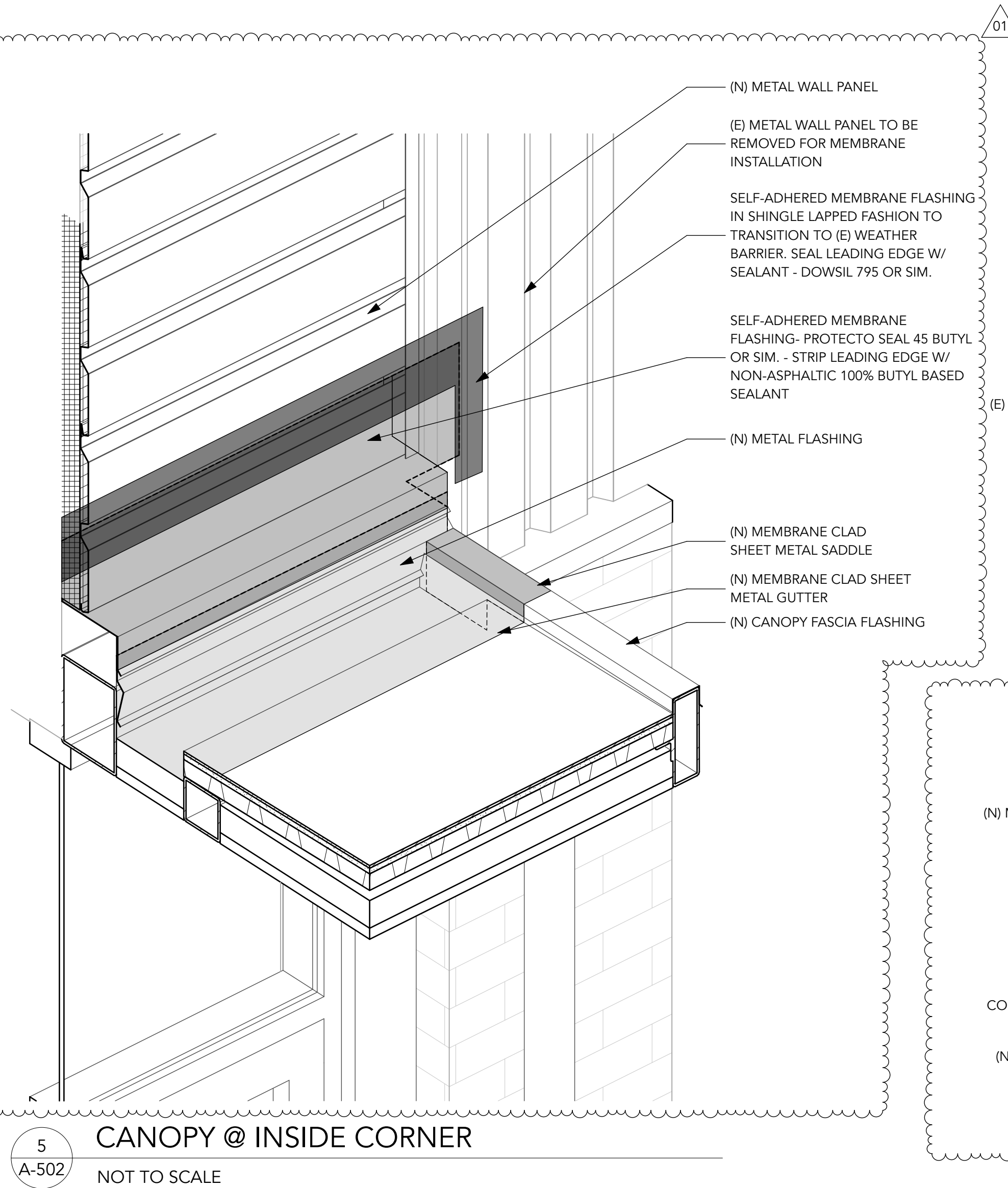


1 FOOTING DETAIL @ COMM. POST  
A-501 SCALE: 1 1/2" = 1'-0"

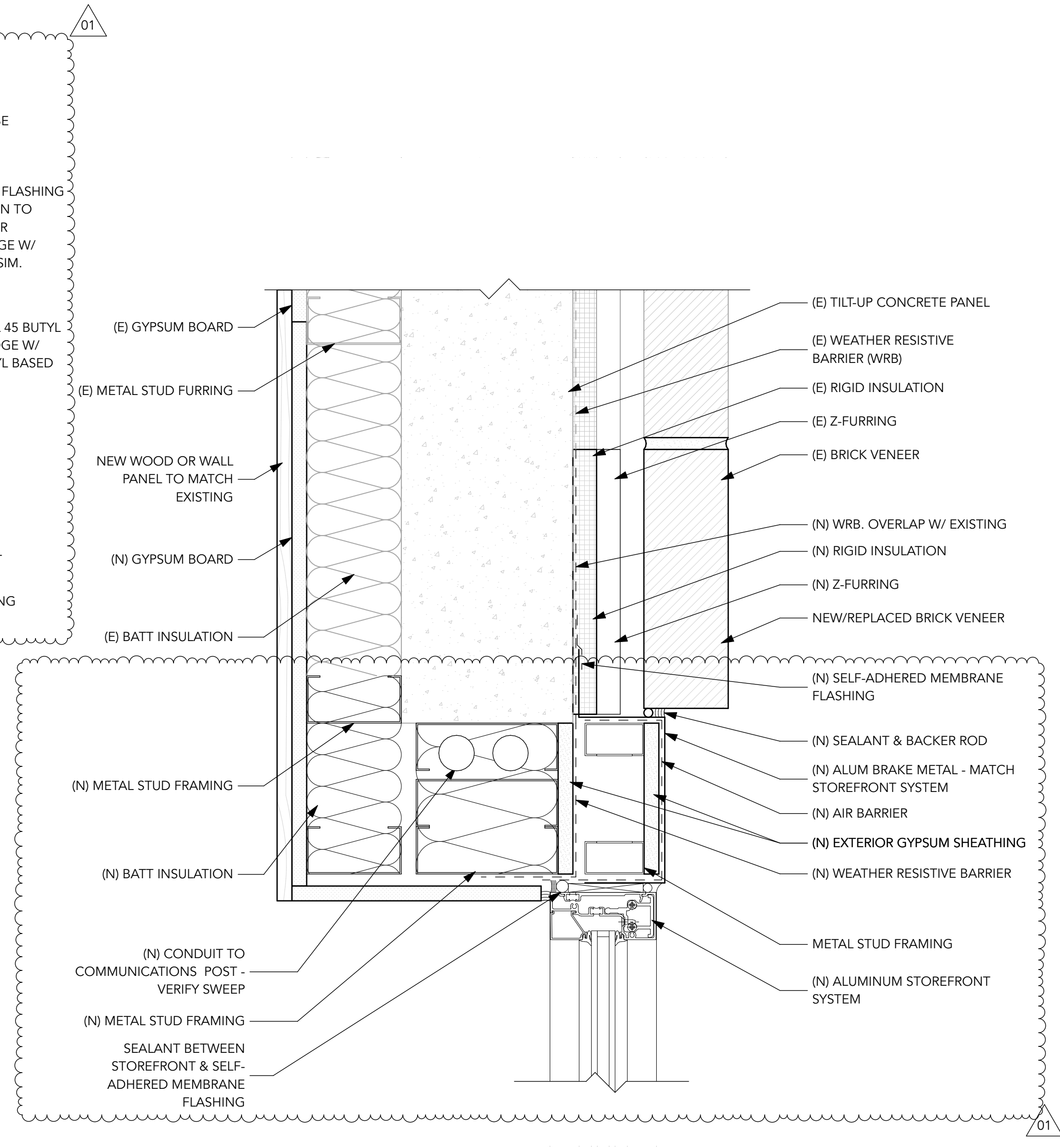




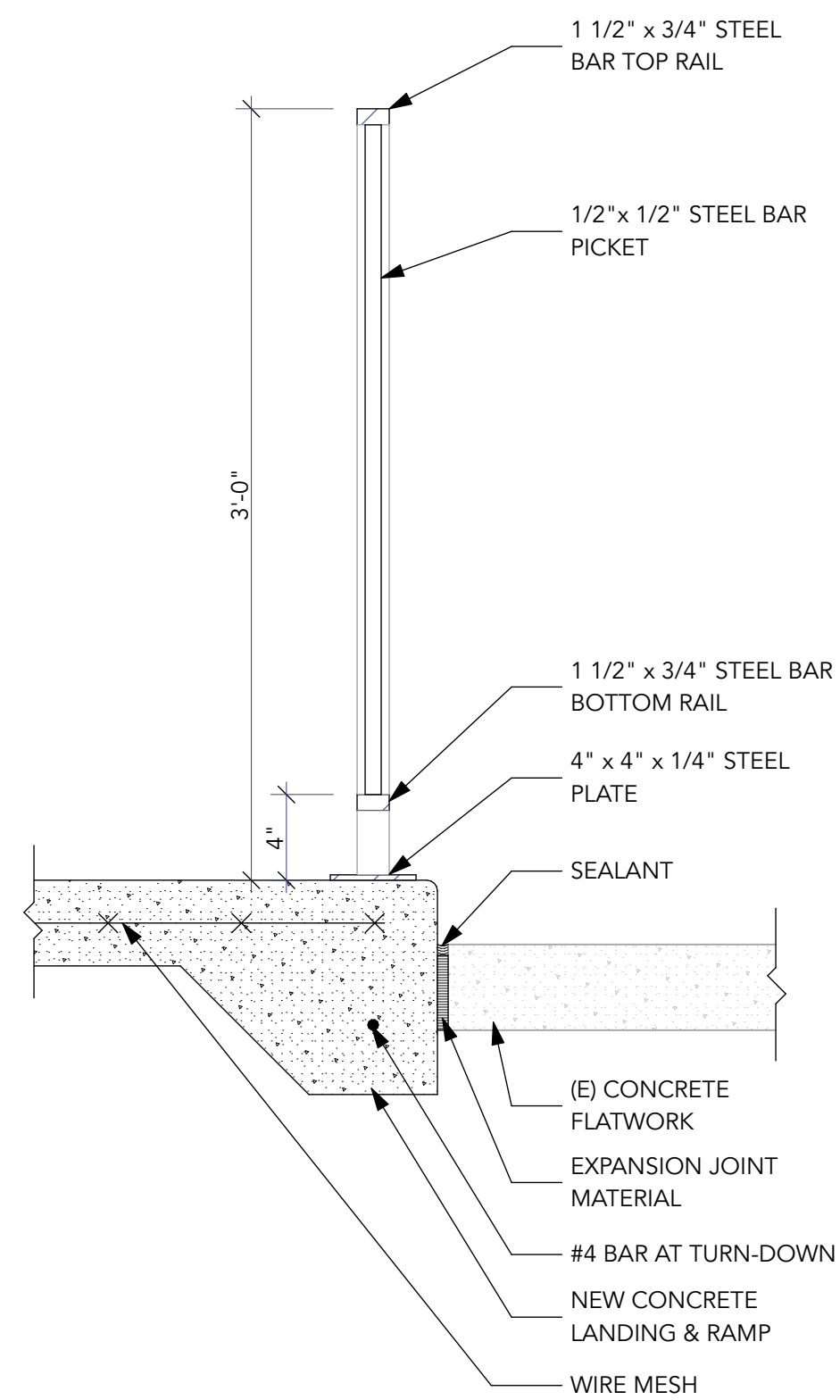
6  
A-502  
CANOPY @ OUTSIDE CORNER  
NOT TO SCALE



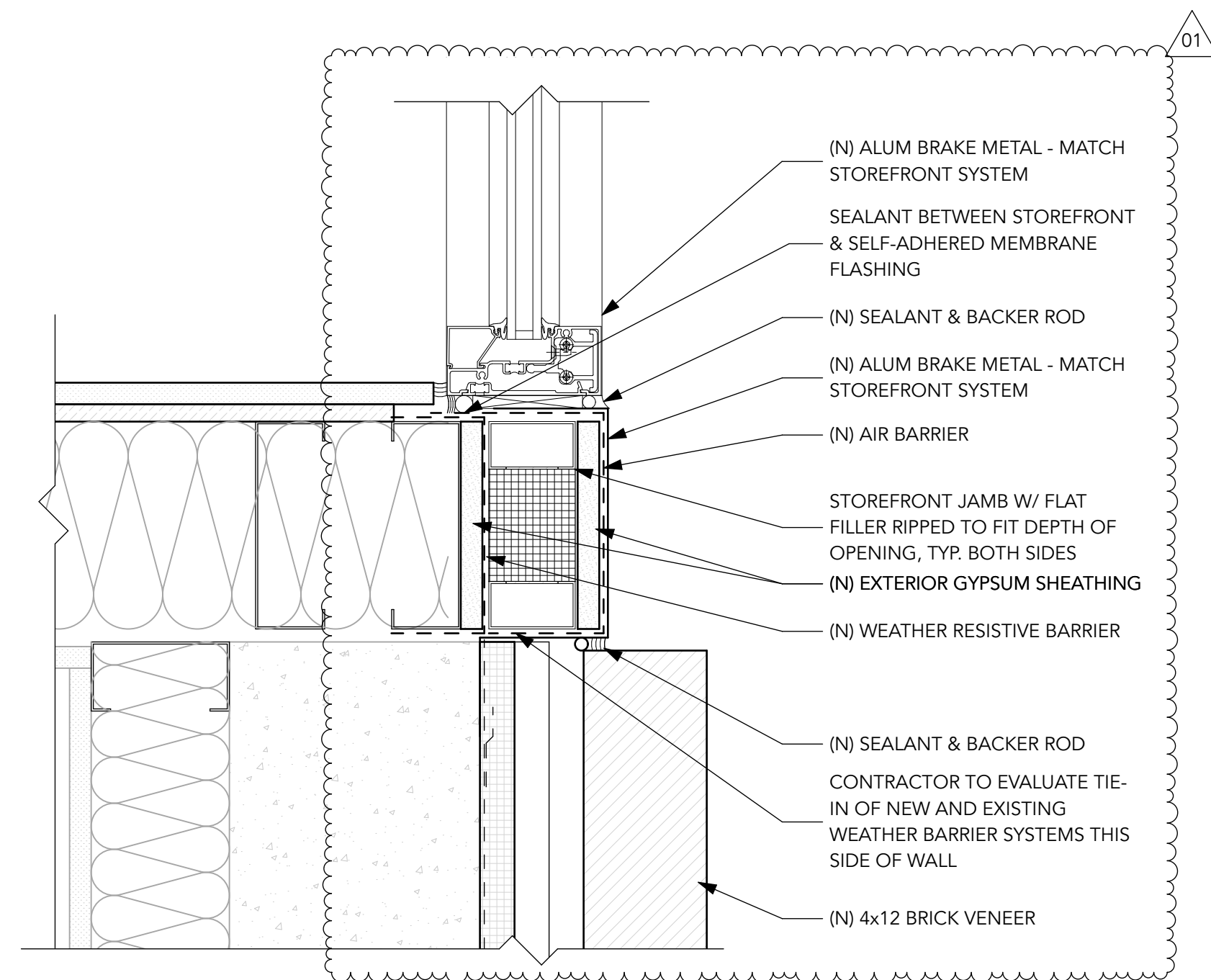
5  
A-502  
CANOPY @ INSIDE CORNER  
NOT TO SCALE



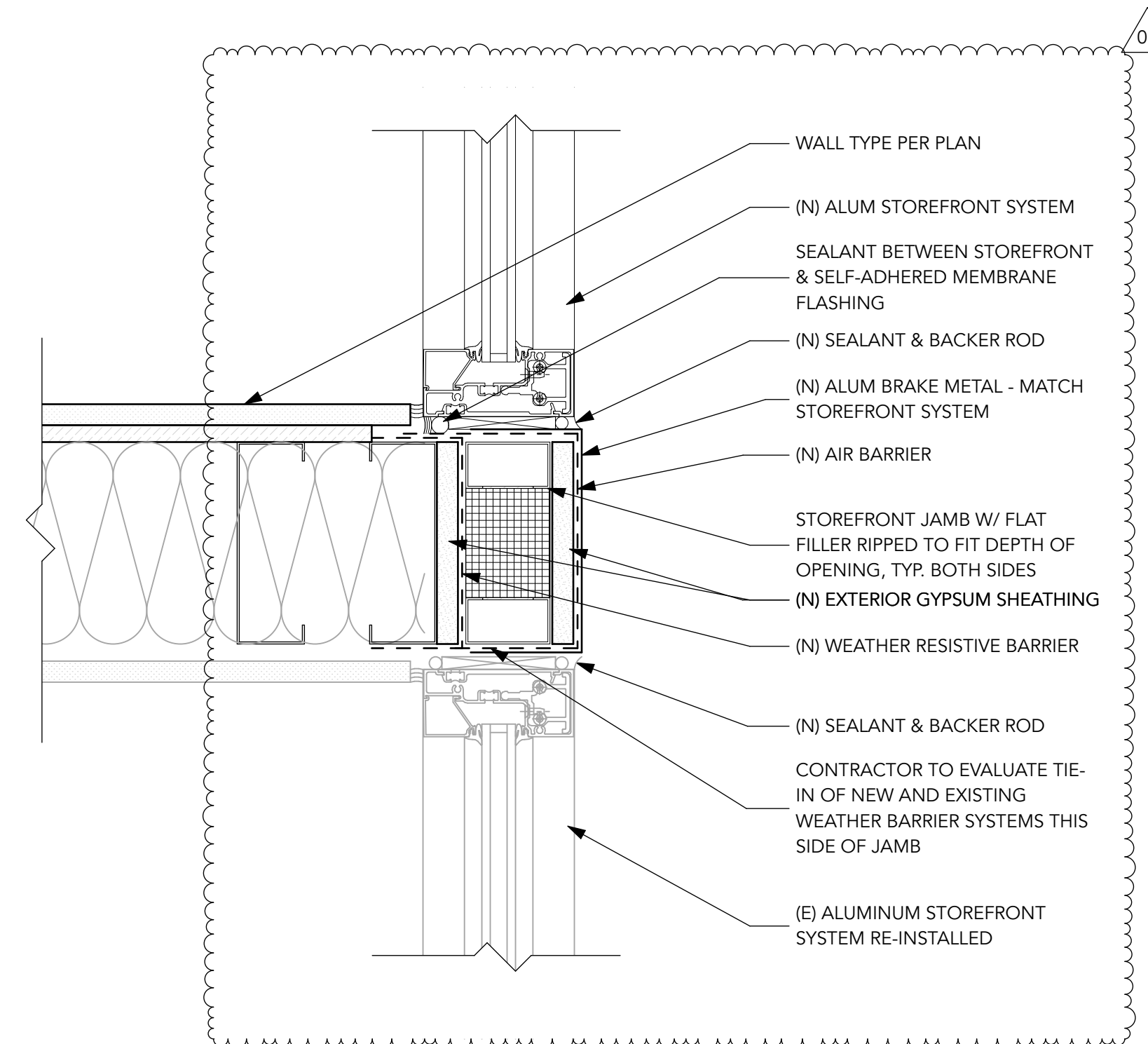
2  
A-502  
JAMB @ STOREFRONT WINDOW  
SCALE: 3" = 1'-0"



4  
A-502  
RAILING DETAIL  
SCALE: 1 1/2" = 1'-0"

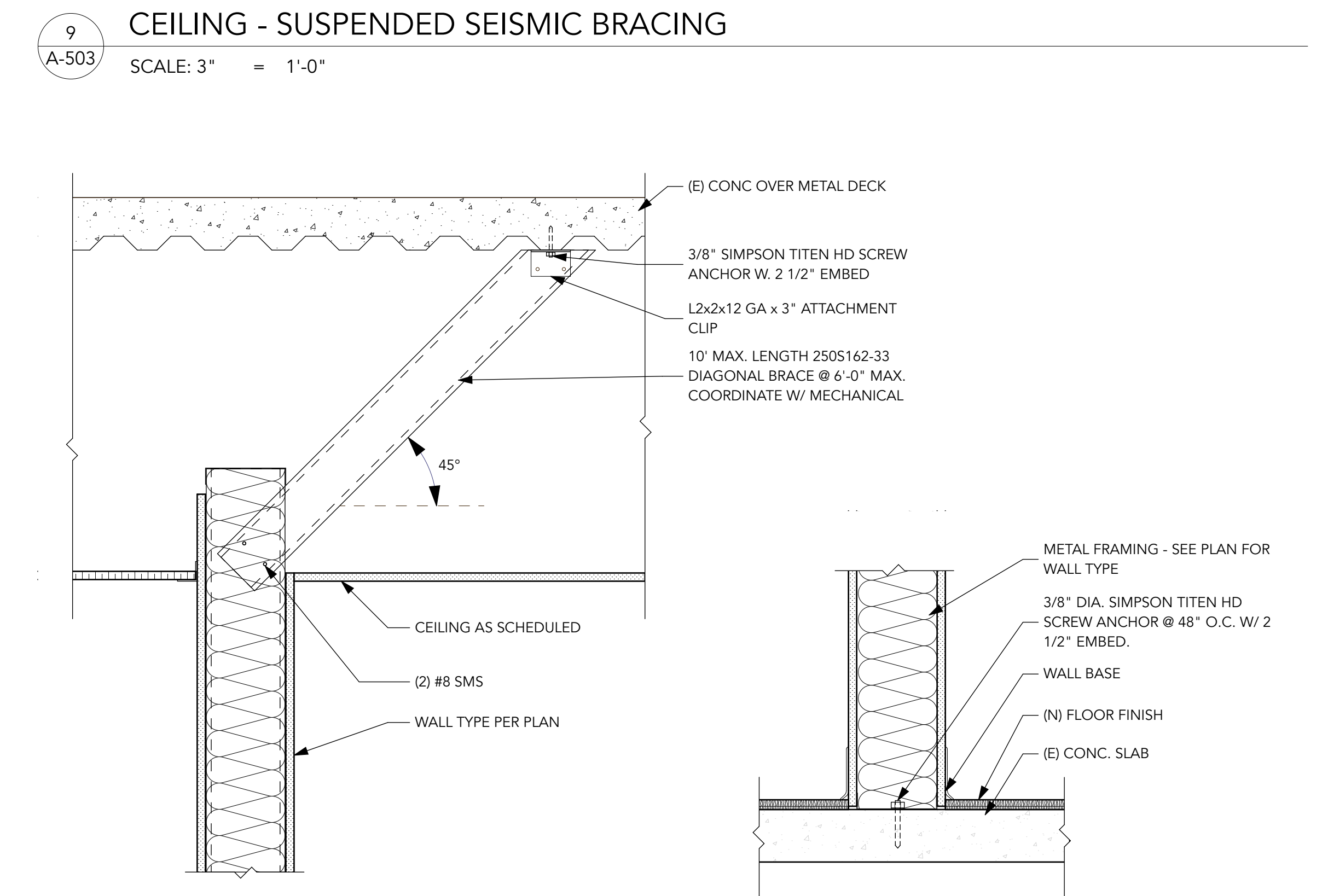
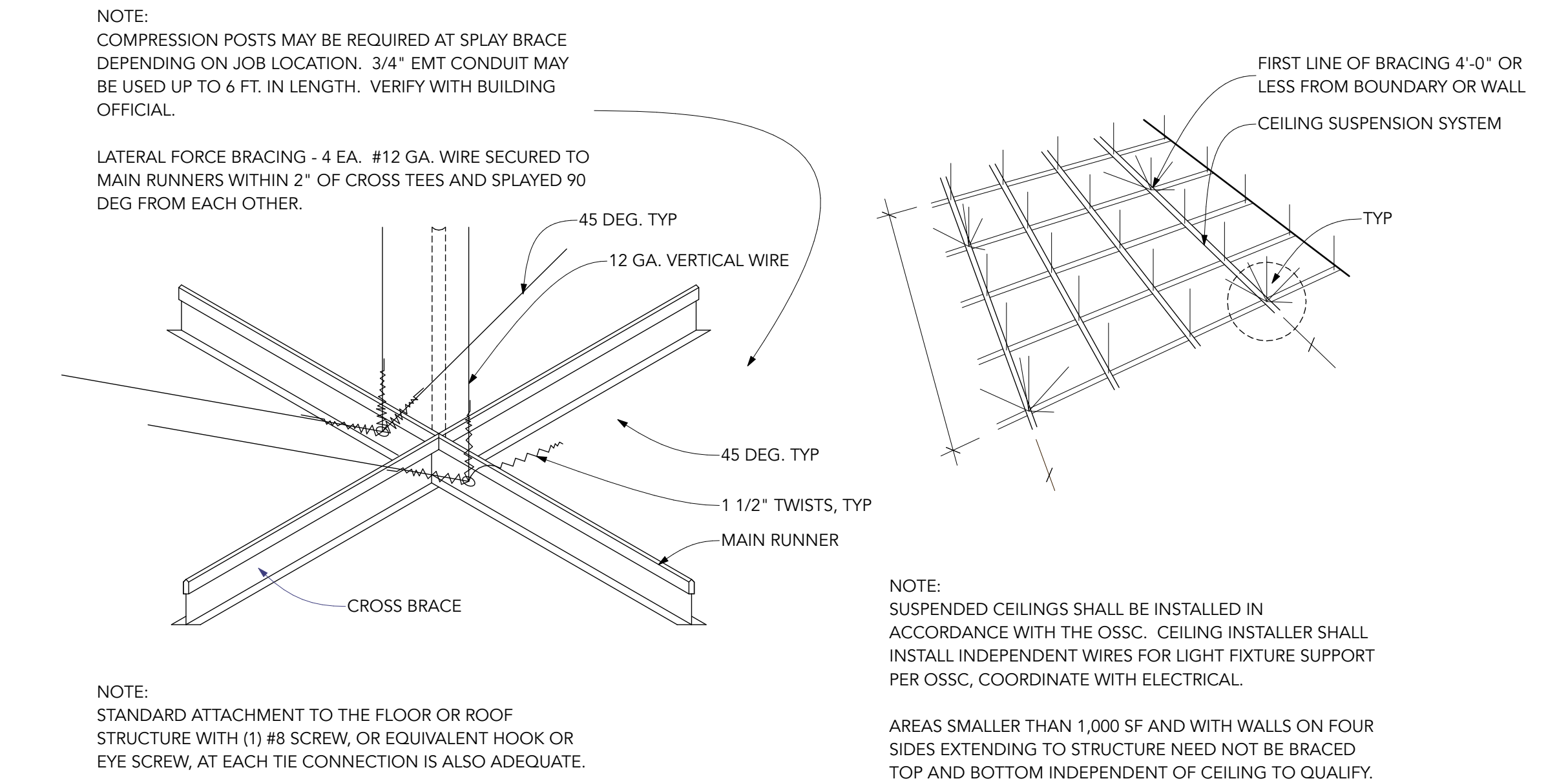
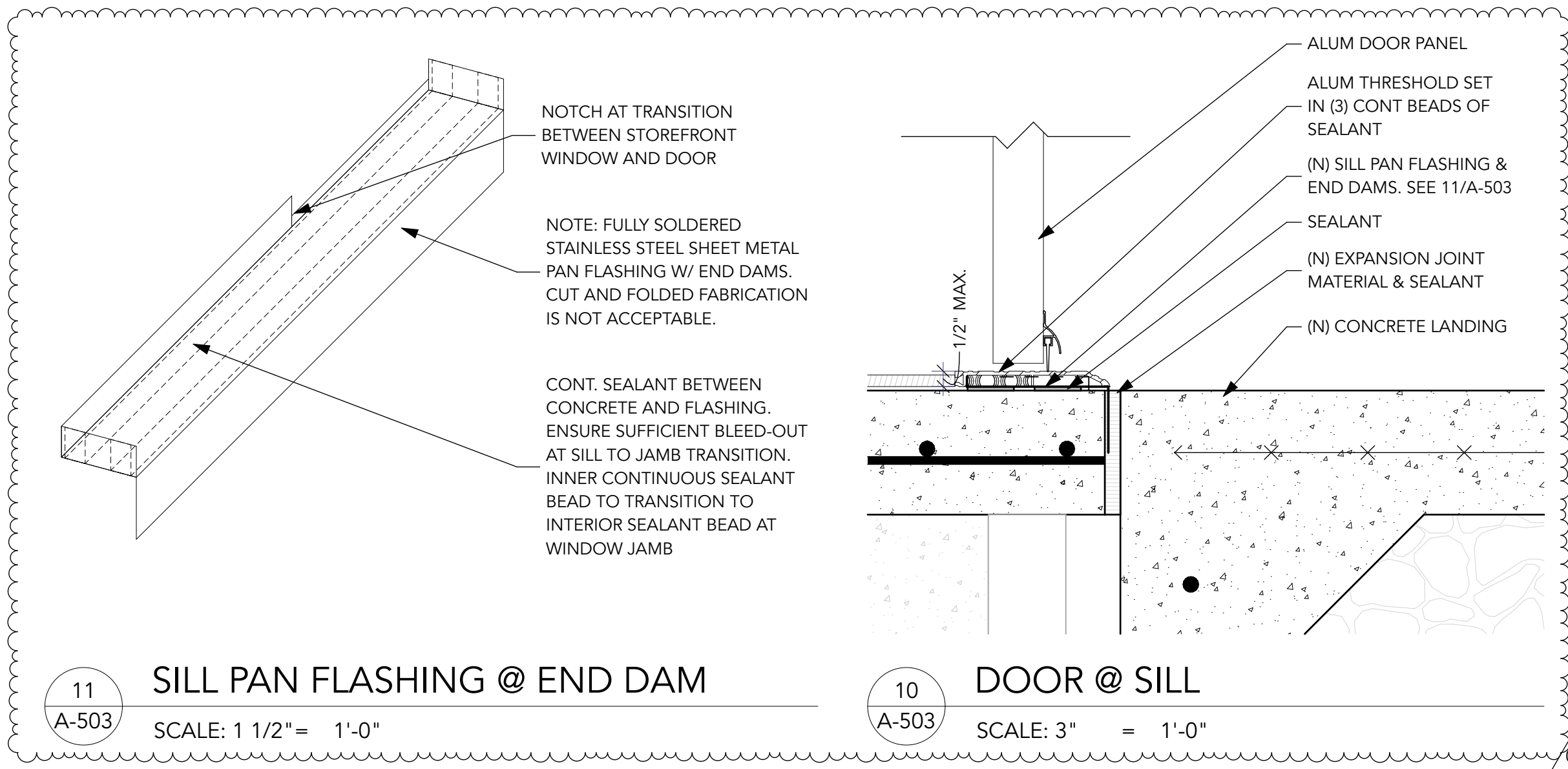


3  
A-502  
JAMB @ STOREFRONT WINDOW  
SCALE: 3" = 1'-0"



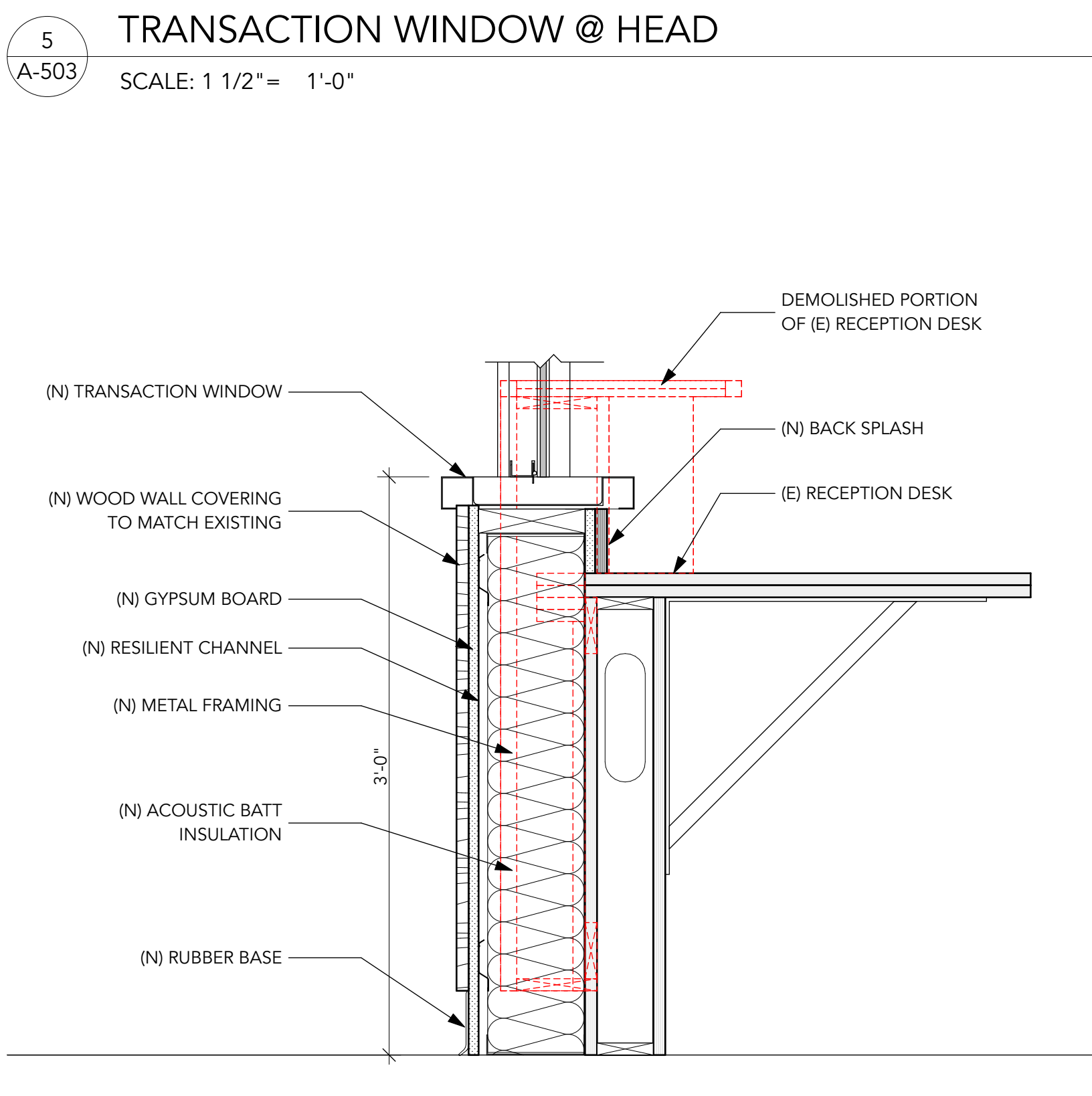
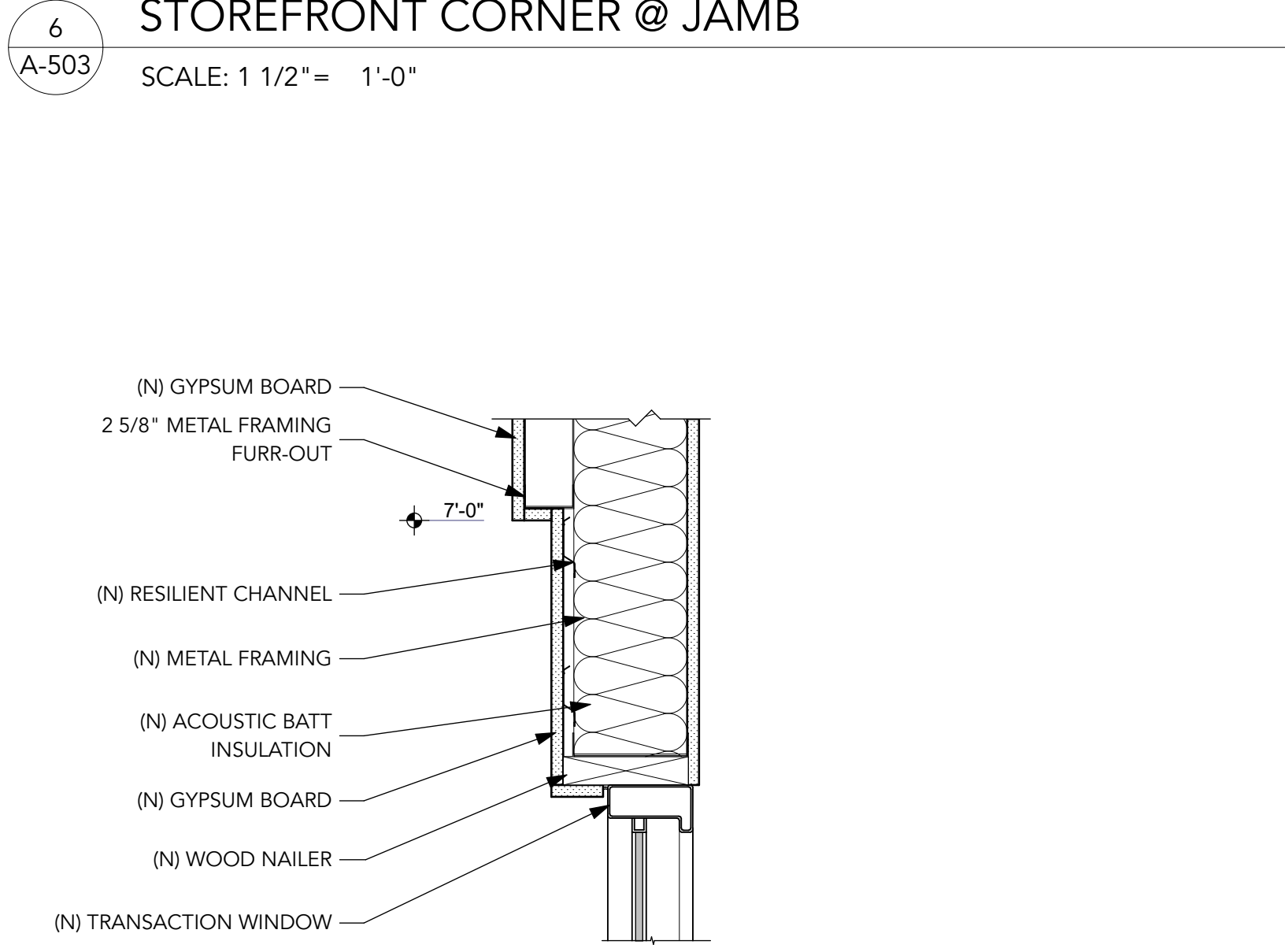
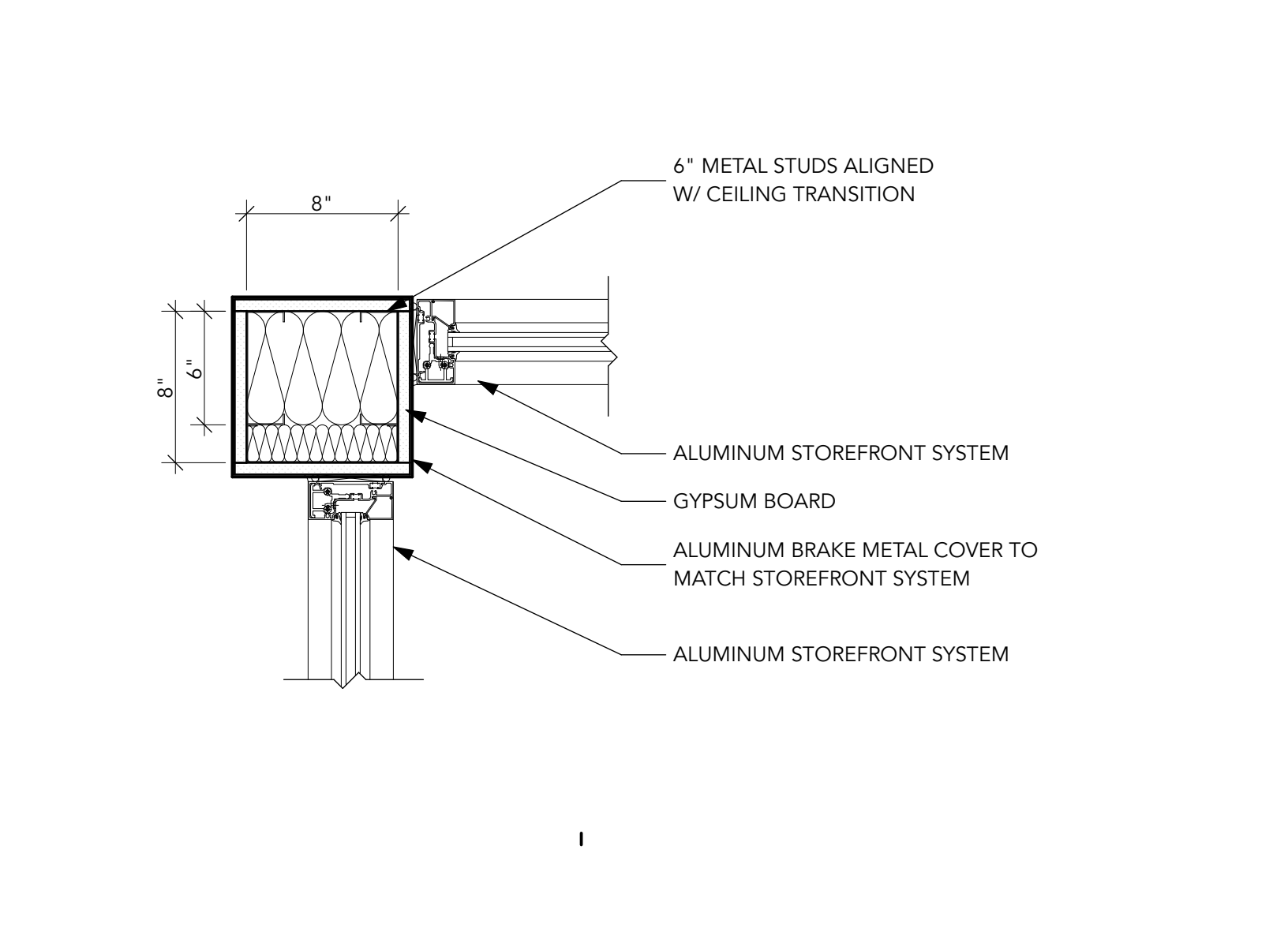
1  
A-502  
JAMB @ STOREFRONT WINDOW  
SCALE: 3" = 1'-0"



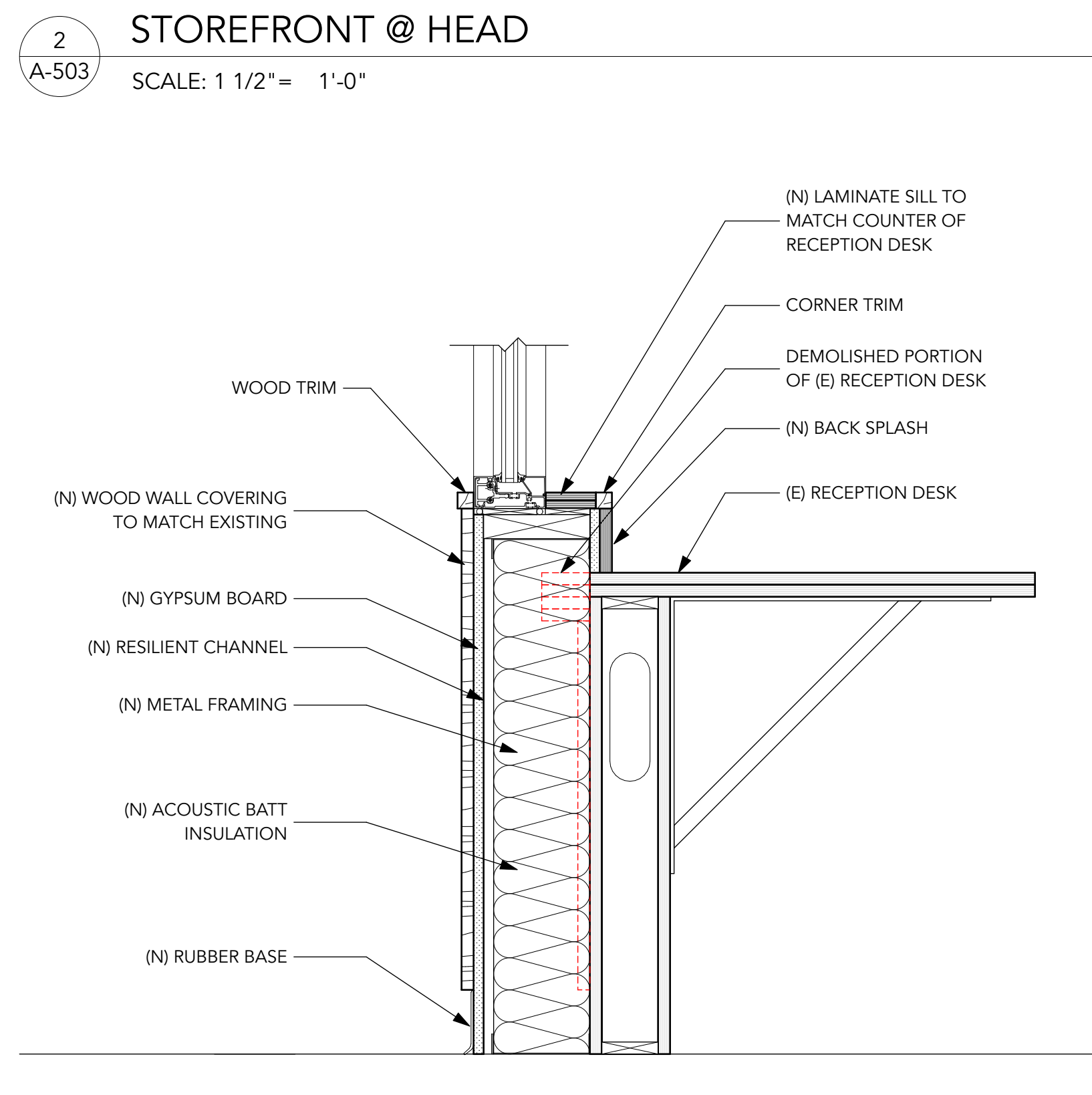
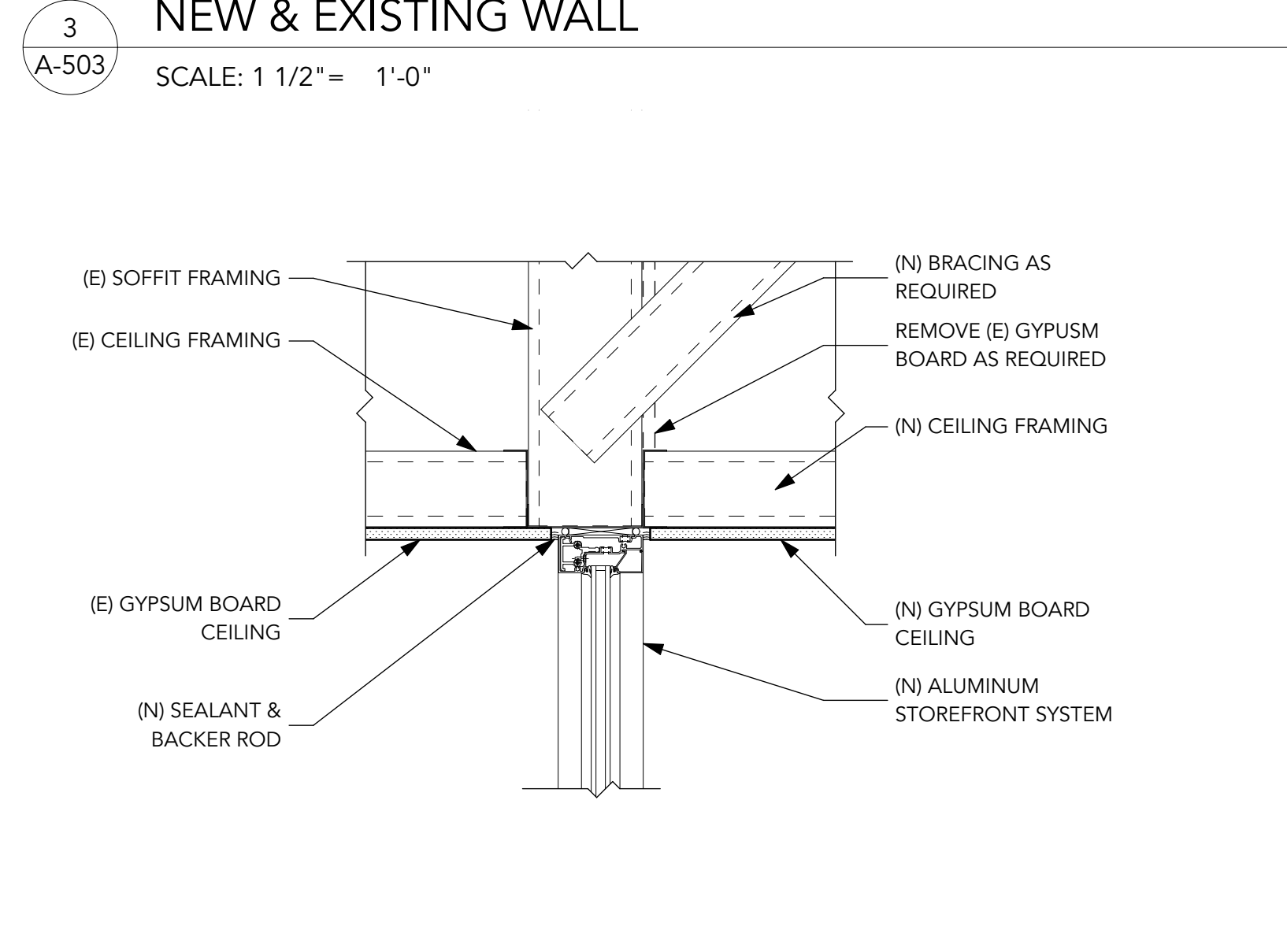
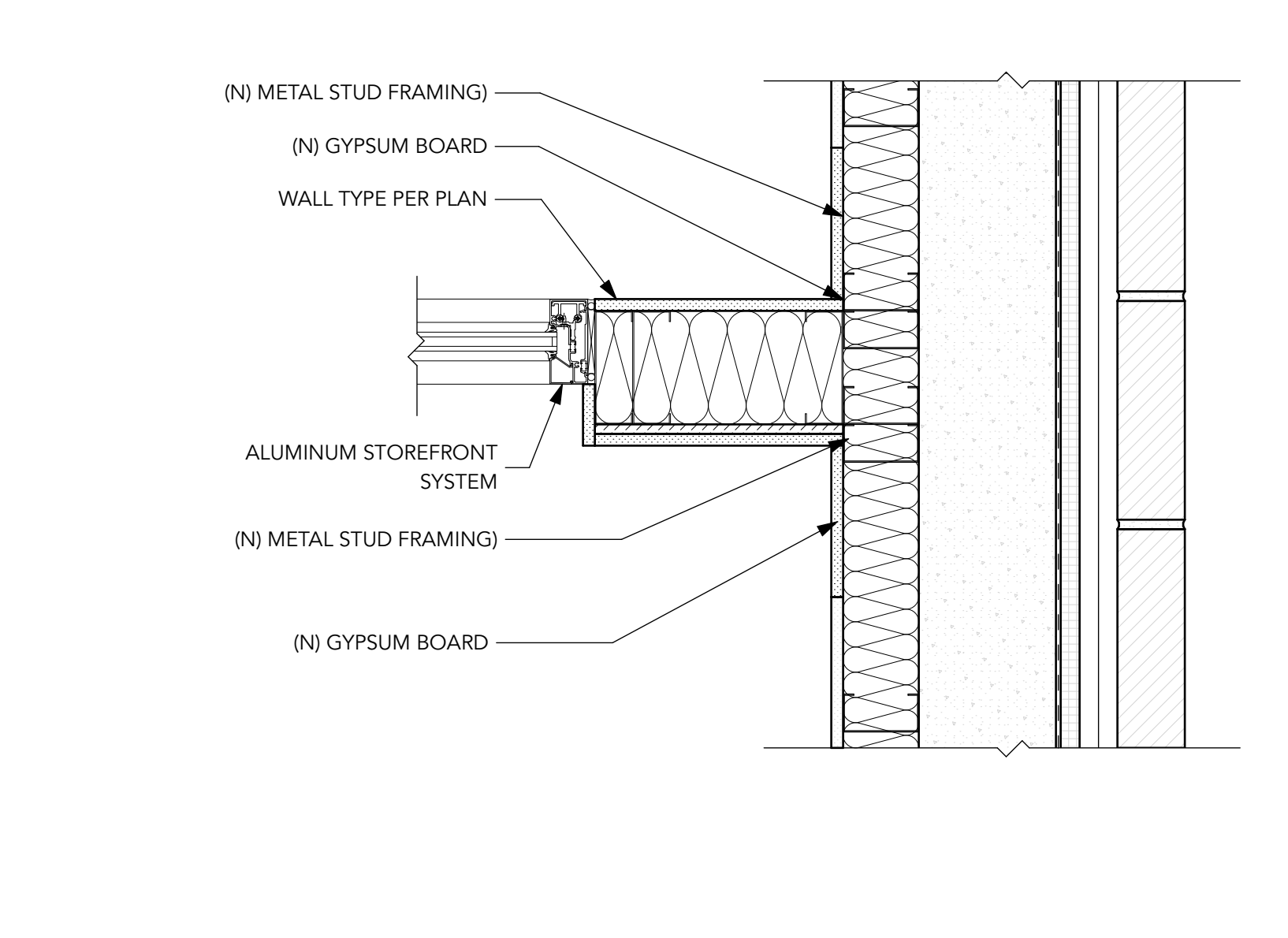


**8 METAL STUD PARTITION, TYP.**  
SCALE: 1 1/2" = 1'-0"

**7 METAL STUD PARTITION, TYP.**  
SCALE: 1 1/2" = 1'-0"



**4 WALL & CASEWORK DETAIL @ WINDOW**  
SCALE: 1 1/2" = 1'-0"



**1 WALL & CASEWORK DETAIL @ STOREFRONT**  
SCALE: 1 1/2" = 1'-0"